



Translation of the text part to be used together with original MEZ Sewing Kit instruction for

## Popcorn Bag – grey with Crochet Decoration



[mezcrafts.com](http://mezcrafts.com)  
[anchorcrafts.com](http://anchorcrafts.com)

   @anchorcrafting

Designed by MEZ Studio

Sewing Kit Ref.: A25SEWK-01003

MEZ Needlecraft GmbH, 2023. All Rights Reserved.



60 cm x 150 cm fabric 100% cotton



100 m (recycled PES)



Anchor Creativa Fino: 50 g

30 cm x 35 cm  
(excluding straps)**EXTRAS**

Volume fleece 100 cm x 80 cm (Polyester)

Ruler, scissors, pen, sewing needle, pins, sewing machine, iron  
We recommend using a patchwork ruler and a rotary cutter.

# Popcorn Bag – grey with Crochet Decoration

**GENERAL INFORMATION**

You have bought a MEZ Sewing Kit containing the ingredients to sew and crochet a beautiful handbag. Below you will find the translation of the instruction part. Regarding the sewing patterns please use the original patterns to cut out which are included in the kit.

**MATERIAL**

The package contains the ingredients for sewing an attractive fabric bag, lined with the same fabric and adorned with a popcorn stitch crochet trim.

**REQUIRED TOOLS**

Scissors, pen, sewing needle, pins, sewing machine, iron, crochet hook size 2.5, transparent adhesive tape.

**ABBREVIATIONS**

**rs on rs** = right side on right side

**ls on ls** = left side on left side

**SA** = seam allowance

**PREPARE THE PATTERN**

For the pattern, cut out paper pattern pieces A + B and join them together with transparent adhesive tape following the arrows.

**CUTTING**

Trim the selvages just before starting. The seam allowance of 1 cm, or as indicated in the text, is included in the pattern!

Please follow the cutting plan exactly, as the amount of fabric is calculated accordingly. First, draw all pattern pieces on the left side of the fabric and mark them with the corresponding letters.

**FABRIC, SEE CUTTING PLAN (FIG. 1)**

Place the fabric in the fold (right sides together, fold to 75 x 60 cm).

**Bag Straps:** 2x 56 cm x 8 cm

**Bag Body:** 4x (2 pieces for the outer bag, 2 pieces for the bag lining)

**SEWING****BAG STRAPS**

**1).** Fold the straps lengthwise, left sides together, iron, then unfold, then fold the long cut edges towards the center by 1 cm and iron (Fig. 2).

**2).** Topstitch the long sides 0.5 cm wide. Place each strap flush on the right side of the top edge of a bag part and topstitch it 0.5 cm from the edge.

**BAG BODY**

Topstitch the bottom folds of all 4 bag parts right sides together by 0.75 cm, and neaten the edge.

Lay 2 bag parts right sides together and stitch the side and bottom edges = 1 outer bag.

Stitch the other 2 lining pieces in the same way but leave an opening of about 8 cm at the bottom edge. Slide the lining bag right sides together into the outer bag (with the straps in between). Stitch the top edge with a 0.5 cm seam allowance. Turn the bag right side out through the opening at the bottom. Fold in the seam at the opening and close with hand stitches. Press the top edge flat, then topstitch around it by 0.75 cm.

**CROCHET TRIM**

For the trim of 60 cm length, start with 131 ch + 1 turning ch, follow the crochet chart, and finish accordingly. Stretch the trim, dampen, and let it dry.

**FINISHING**

Sew the trim into a ring and pull it over the upper edge of the bag. Fix it with pins. Hand-sew the trim onto the bag.

FIG. 1  
CUTTING PLAN

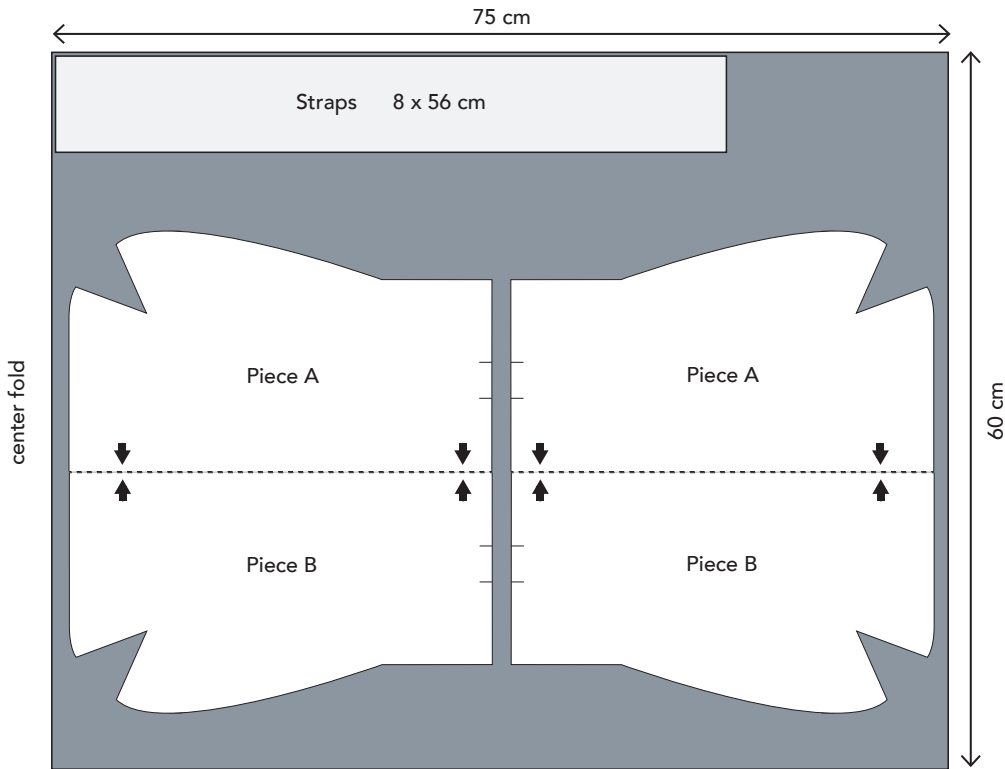
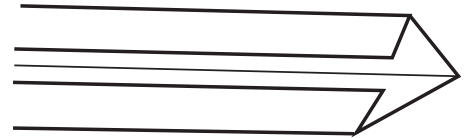
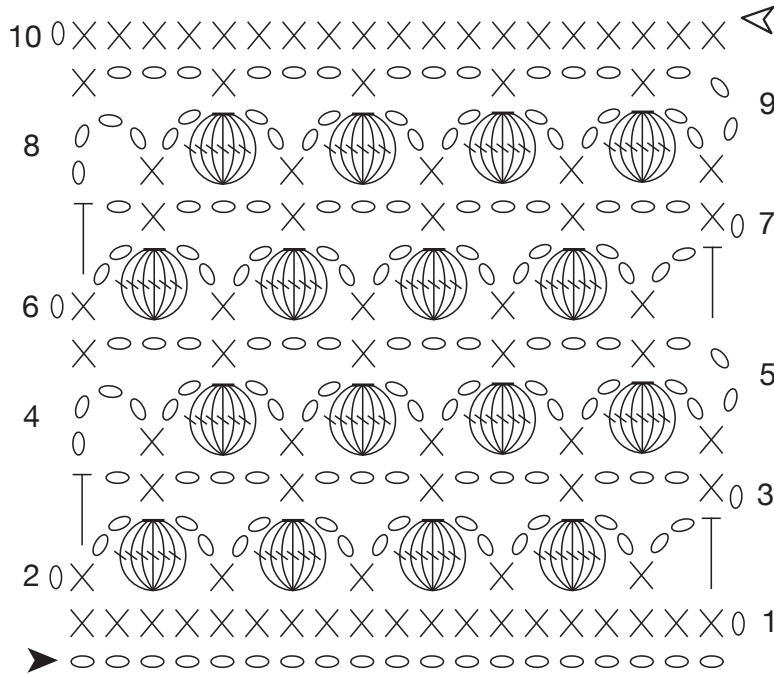



FIG. 2



CROCHET CHART



- ▶ Start
- ▷ End
- ch (chain)
- × dc (double crochet)
- ┆ htr (half treble crochet)
-  1 popcorn made of 7 treble crochets (crochet 7 trebles, remove the hook from the loop, insert it into the first treble and pull the loop through)